

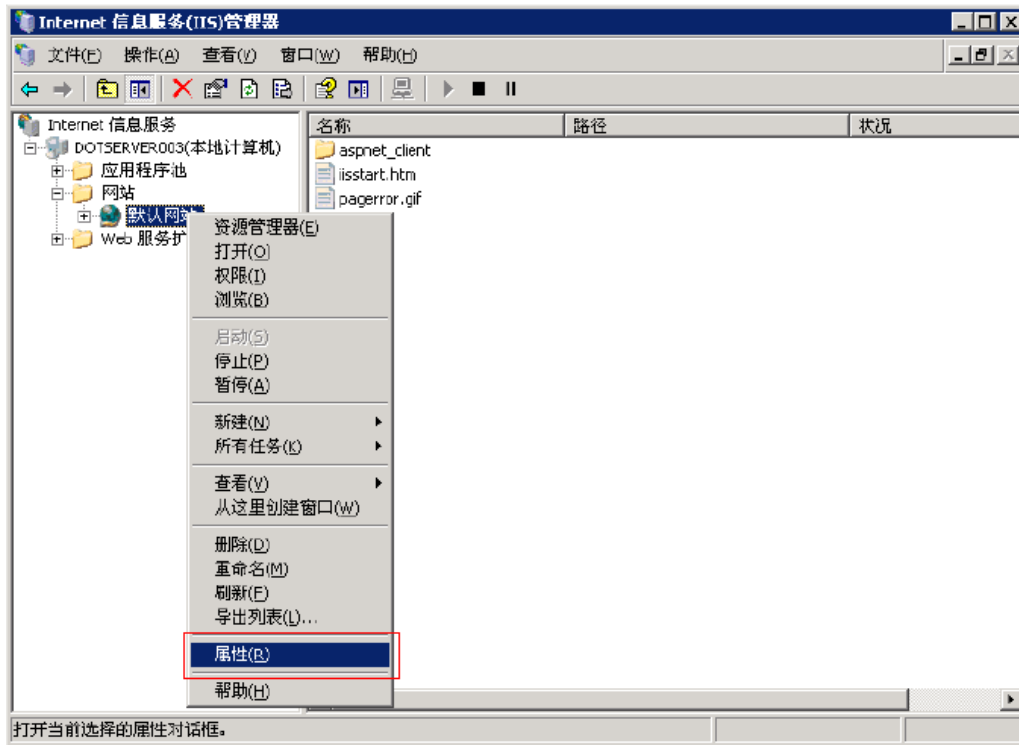


服务器证书安装配置指南

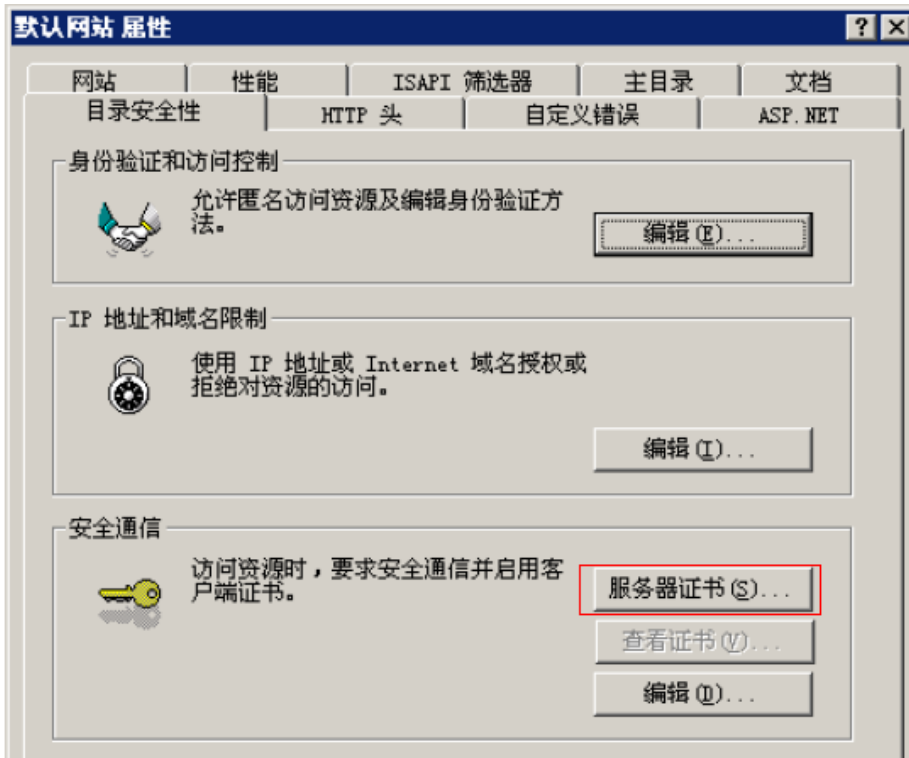
IIS6.0

二〇二一年一月

打开IIS服务管理器，打开Web站点的属性



选择目录安全性属性，点击服务器证书



选择从.pfx文件导入证书，点击下一步



选择已有的PFX文件，点击下一步



输入该PFX文件密码，点击下一步



The screenshot shows a Windows dialog box titled "IIS 证书向导" (IIS Certificate Wizard). The main heading is "导入证书密码" (Import Certificate Password) with the instruction "必须提供密码才能导入证书。" (A password must be provided to import the certificate.). Below this, it says "输入要导入的证书的密码。" (Enter the password for the certificate to be imported.). There is a label "密码 (P):" (Password (P):) followed by a text input field containing six asterisks "*****". At the bottom right, there are three buttons: "< 上一步 (P)" (Previous Step (P)), "下一步 (N) >" (Next Step (N)), and "取消" (Cancel).

输入SSL端口号 (443), 点击下一步



The screenshot shows a Windows dialog box titled "IIS 证书向导" (IIS Certificate Wizard). The main heading is "SSL 端口" (SSL Port) with the instruction "为此网站指定 SSL 端口。" (Specify the SSL port for this website.). Below this, it says "此网站应该使用的 SSL 端口 (L):" (The SSL port that this website should use (L):). There is a text input field containing the number "443". At the bottom right, there are three buttons: "< 上一步 (P)" (Previous Step (P)), "下一步 (N) >" (Next Step (N)), and "取消" (Cancel).

证书安装完成，点击完成



此外，为了保证兼容性，还需要在IIS服务器上安装我们的交叉证书，具体操作见《交叉证书安装》

按照以上的步骤配置完成后就可以使用<https://www.domain.com> 来访问。

GlobalSign China Co., Ltd

环玺信息科技（上海）有限公司

2021年 1 月

